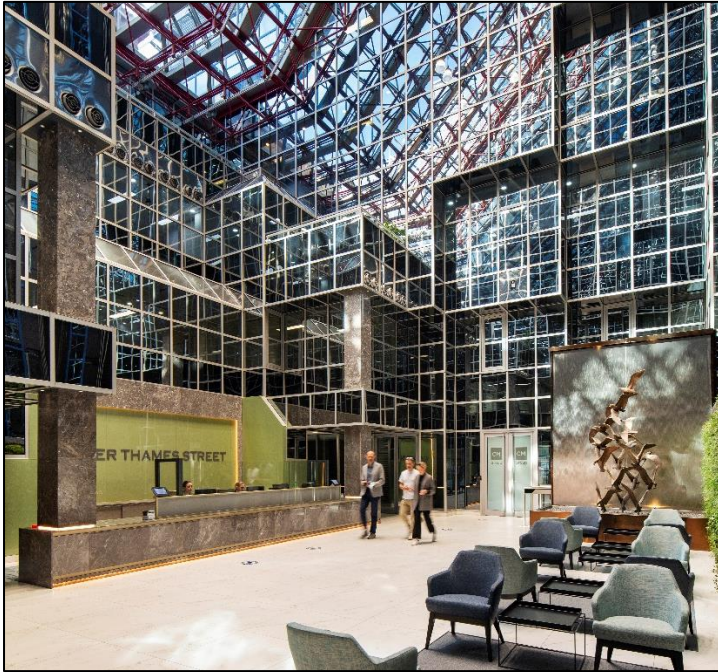


Panoramic River Views

10 Lower Thames Street, London, EC3



Transport Links

- 0.12 miles from Monument
- 0.25 miles from London Bridge
- 0.32 miles from Cannon Street
- 0.40 miles from Bank

Lease

New leases are available direct from the landlord.

Rent

3rd floor – £42.50 per sq. ft.

Accommodation

3 rd Floor	5,000 sq. ft. – 21,152 sq. ft.	U/O
1 st Floor (North)	11,630 sq. ft.	

Rates Payable (2023/24)

Estimated at £20.16 per sq. ft.

However, all interested parties should make their own enquiries.

Service Charge

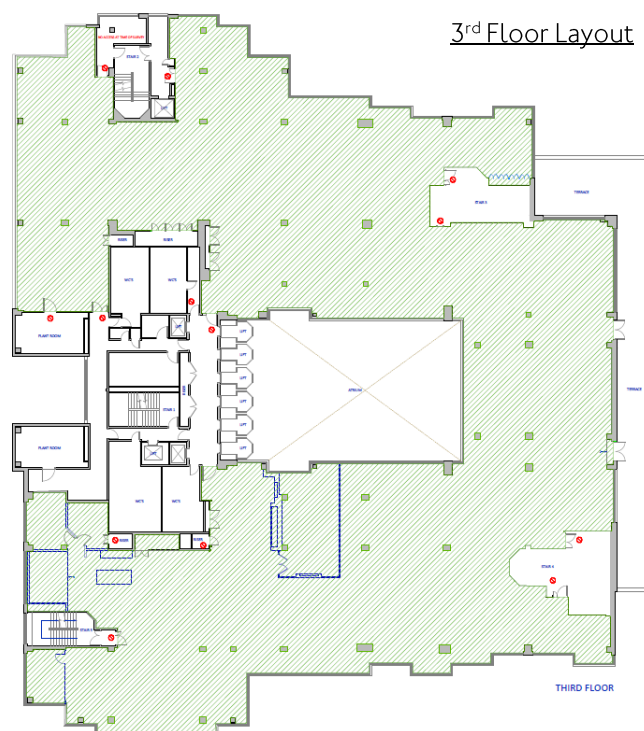
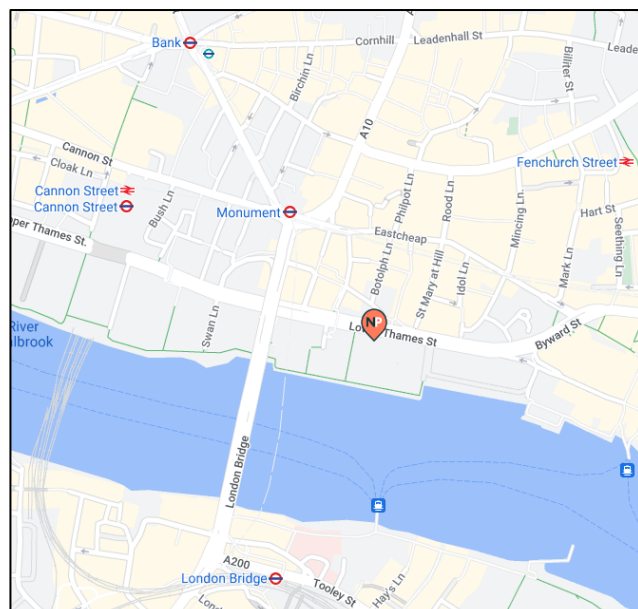
Estimated at £16.50 per sq. ft.

VAT

The building has been elected for VAT

Amenities

- Refurbished reception, entrance and common parts
- Café amenity / gym facilities
- New LED Lighting
- Panoramic river views
- Air Conditioning
- Fully accessible raised floors
- 24 hour security
- Bike racks and shower facilities
- Car parking available by separate arrangement
- EPC Rating – B (by 2024 Autumn)



Newton Perkins

Jonathan Beilin – 07976 392 016
E-mail: jb@newtonperkins.com

Harry Woods – 07884 602 870
E-mail: hw@newtonperkins.com

Cushman & Wakefield

Tom Fayers – 020 3296 7226
E-mail: tom.fayers@cushwake.com

Newton Perkins LLP, Peek House, 20 Eastcheap, London EC3M 1NP

Newton Perkins for themselves and for the vendors or lessors of this property whose agents they are given notice that:- (1) The particulars are set out as a general outline for the guidance of the intending purchasers and do not constitute part of an offer or contract; (2) All descriptions, dimensions, references to condition and necessary permissions for use and occupation and other details are given without responsibility and any intending purchasers should not rely on them as standards or representations of fact but must satisfy themselves by inspection or otherwise as to the correctness of each of them; (3) No persons in the employment of Newton Perkins has any authority to make or give any representation or warranty whatsoever in relation to this property